



5

# Brilliant

Chess Studies  
You must know

by Krisztian Szabo  
*International Chess Grandmaster*

„My life is full of colours that I play on black and white squares”



In my professional chess career spanning over three decades, I have worn many hats: player, writer, and trainer, among various other roles within the chess community.

Throughout this journey, I have dedicated considerable time and energy to advocating for the endgame study as an unparalleled educational tool. These studies are not only essential for developing a keen sense of aesthetics and precision but also for honing the ability to accurately assess the power and qualities of each piece, both individually and in conjunction with others.

The path of exploring endgame studies has been incredibly rewarding and enjoyable for me, and I am confident that you will share in this experience.

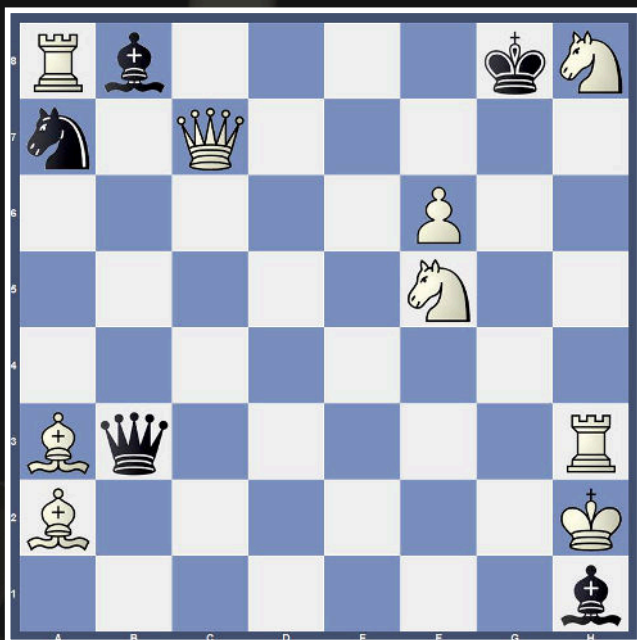
The joy and satisfaction derived from mastering these intricate puzzles are unmatched, and they provide a profound sense of accomplishment.

Moreover, the skills cultivated through studying endgames extend far beyond the chessboard. They are invaluable in business and everyday life, teaching us to think critically, strategize effectively, and appreciate the harmony that comes from well-coordinated efforts.

The examples presented in this e-book are meticulously chosen to enhance these abilities, offering both intellectual stimulation and practical benefits.

Join me in this exploration of five exquisite chess studies. Through them, you will not only improve your chess skills but also gain insights that can be applied to various aspects of your life. Enjoy the journey and the many lessons it brings.

# Chess Challenge #1: Strategic Checkmate in One



Challenge: White to play and secure checkmate in just one move.

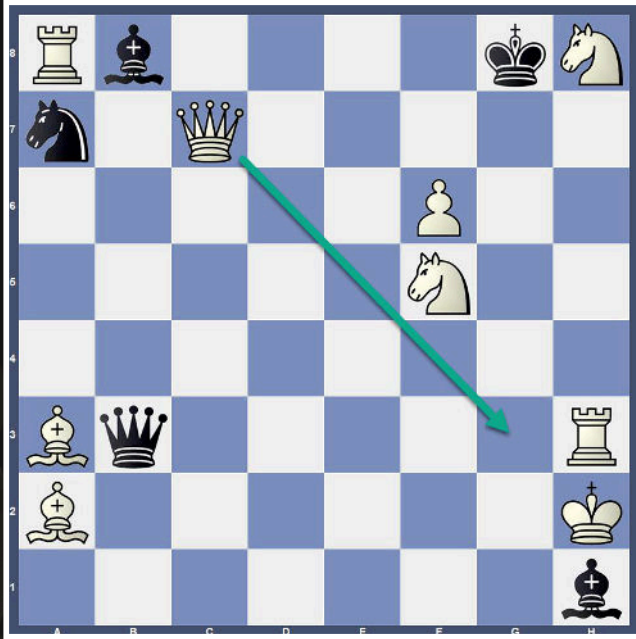
Context and Strategic Thinking:

In approaching this chess position, it's crucial to analyze all potential checks, similar to a business leader evaluating different strategic options. Many attractive moves may appear promising, but only one delivers the ultimate success — checkmate in this scenario. An example of a misleading option would be playing **1.Rxb8\*** (Rook captures Bishop at B8), analogous to choosing a seemingly strong business tactic that ultimately does not address competitive threats effectively, as the opponent can easily counter with **1...Nc8** (Knight to C8). The winning strategy might not be the most obvious or direct approach.

\* [To learn about chess notations, please click here!](#)

Solution:

## Innovative Queen Maneuver



Correct Move: The decisive move is **1.Qg3#** (Queen to G3)

Explanation:

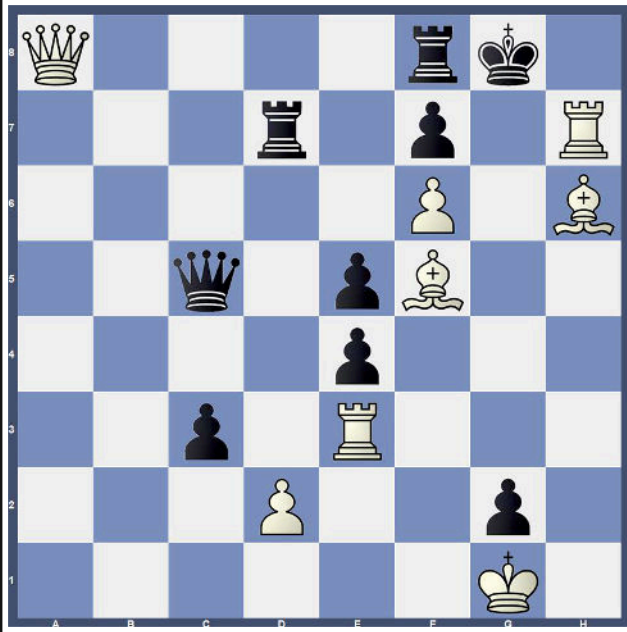
This move showcases the queen's strategic retreat, drawing a parallel to business strategies where sometimes a counterintuitive step back can create a stronger position for future advancements.

The queen moves diagonally backwards rather than forwards, akin to a company pivoting to explore less conventional avenues for growth. This clever maneuver completely cuts off all escape routes for the opposing king, securing a swift victory. This scenario underlines the importance of versatility and creativity in strategy — be it on the chessboard or in the boardroom — highlighting the necessity of considering all angles and sometimes choosing the less obvious path to achieve success.



## Chess challenge #2:

### Navigating Complexity to Checkmate in Two Moves



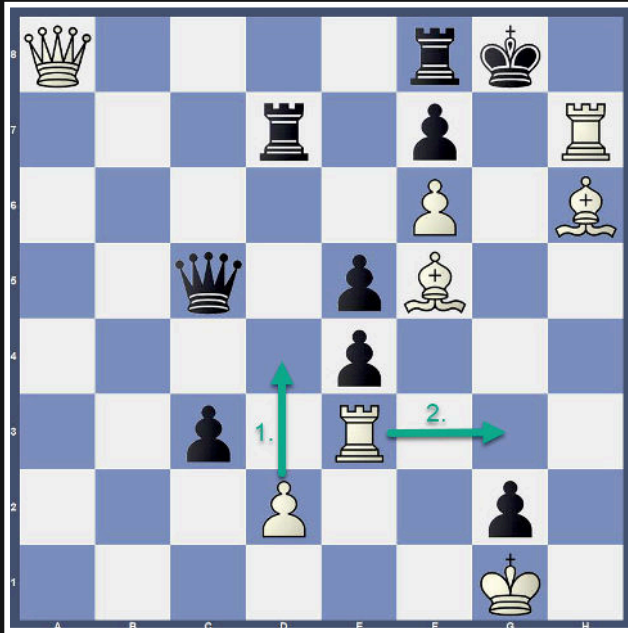
Challenge: White to play and deliver checkmate in two moves.

Context and Strategic Insight:

In this intricate position, White's objective is to achieve checkmate in two moves. The complexity arises from the black queen pinning the rook, which initially seems to block the straightforward path to checkmate with  $Rg3\#$ .

To solve this, a more subtle and strategic approach is required. This scenario underscores the importance of looking beyond immediate checks and considering quiet, preparatory moves that pave the way for a decisive finish.

## Solution:



The correct Move is **1.d4**

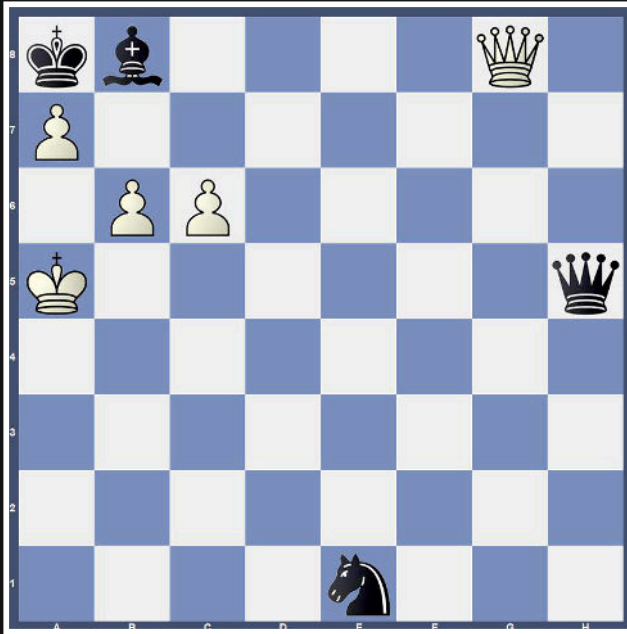
### Explanation:

This move exemplifies the power of strategic positioning and the concept of quiet moves. By playing 1.d4, White closes the diagonal on which the black queen exerts its pin on the rook. This preparatory move does not deliver an immediate check but sets up an inevitable threat.

After 1.d4, White threatens Rg3#, which cannot be stopped effectively by Black. If Black attempts to capture the pawn with 1...Qxd4, White can respond with 2.Qxf8#, delivering checkmate. This sequence demonstrates the brilliance of quiet moves in chess, where indirect actions lead to direct and conclusive outcomes.

This position teaches the valuable lesson of patience and foresight, emphasizing that sometimes the best move is not the most aggressive or direct, but the one that subtly prepares the battlefield for an unavoidable victory.

# Chess challenge #3: Turning the Tables

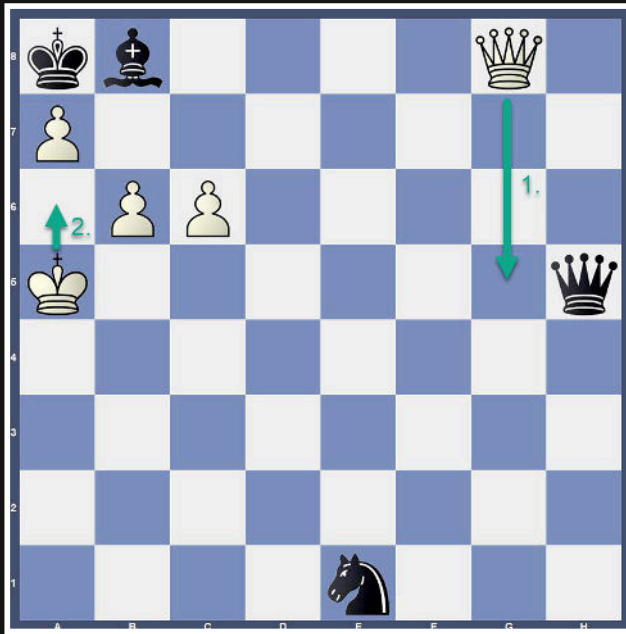


Challenge: White to play and win.

## Context and Strategic Insight:

In this position, White is currently in check and needs to find a winning strategy. If White responds to the check with 1.Ka6, Black can reply with 1...Qe2, and the White king will struggle to evade continuous checks from the black queen. The challenge is to find a way to chase the black queen away from the crucial d1-h5 diagonal and secure a winning position.

# Solution:



The correct Move is **1.Qg5**

Explanation:

This move represents a brilliant and unexpected queen sacrifice. By playing 1.Qg5, White offers the queen to disrupt Black's control over the board.

The sequence unfolds as follows:

**1.Qg5!!** - White sacrifices the queen, inviting Black to capture it.

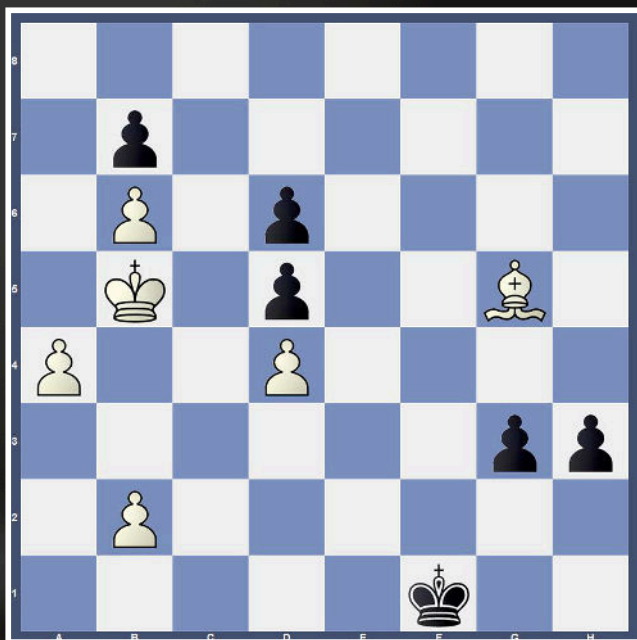
**1...Qxg5** - Black accepts the sacrifice.

**2.Ka6** - Now the White king moves to a6 without the threat of continuous checks from the black queen. With the black queen removed from the crucial diagonal and no immediate checks available, White gains a decisive positional advantage. This strategic queen sacrifice highlights the importance of creative thinking and the willingness to give up significant material to achieve a superior position. By mastering such tactical motifs, players can greatly enhance their ability to turn seemingly adverse situations into winning ones, demonstrating the depth and beauty of chess.

[Check it on the online chessboard!](#)



# Chess challenge #4: Ingenious Defense to Secure a Draw

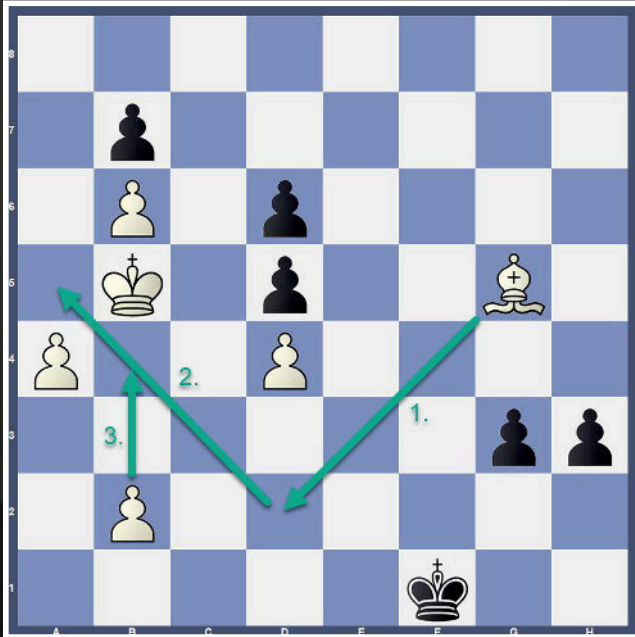


Challenge: White to play and draw.

Context and Strategic Insight:

In this challenging position, White faces the threat of Black's unstoppable g3 and h3 pawns. Realizing that a win is out of reach, White must aim for a draw. A pawn race starting with a5 would be too slow, so a different strategy is required to survive the game.

## Solution:



The correct sequence to secure a draw is as follows:

1. **Bd2** - White begins the defensive maneuver.
- 1... **h2** - Black continues to push the pawn.
2. **Ba5** - White positions the bishop to start closing off escape routes.
- 2... **h1Q** - Black promotes the pawn to a queen.
3. **b4** - White moves the pawn to b4, creating a stalemate situation.

[Check the online chessboard!](#)

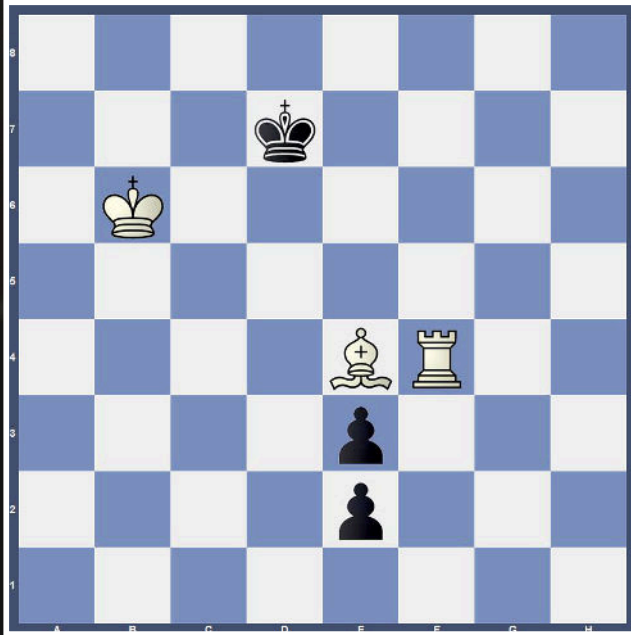
## Explanation:

This sequence is a brilliant example of using the concept of self-stalemate. By playing 1. Bd2, White prepares to limit the mobility of the pieces. After Black's pawn promotion with h1Q, the move 3. b4 locks the position in such a way that the White king has no legal moves, and the newly promoted Black queen has no immediate threats to make.

This ingenious sequence leads to a stalemate, a draw by the rules of chess, as the White king cannot move but is not in check. This defensive resource demonstrates the depth of strategic thinking in chess, where sometimes the best result is achieved by recognizing the limits and creatively using them to avoid defeat.

Understanding and mastering such defensive techniques can greatly enhance a player's resilience and resourcefulness in difficult positions, showcasing the intricate beauty of chess.

# Chess challenge #5: Overcoming Stalemate Defense to Secure Victory

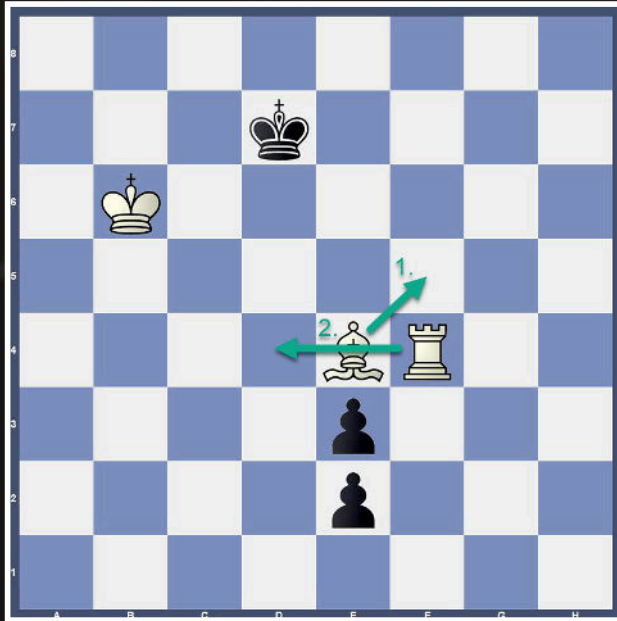


Challenge: White to play and win.

Context and Strategic Insight:

At first glance, it seems almost impossible for White to win this position, as the black pawn is about to promote and there seems to be no immediate way to stop it. Even after delivering some checks, White can capture the pawns, but the black king may escape to d8 and attempt to stalemate itself. The challenge is to navigate this tricky situation and find a way to secure a win without falling into the stalemate trap set by Black.

## Solution:



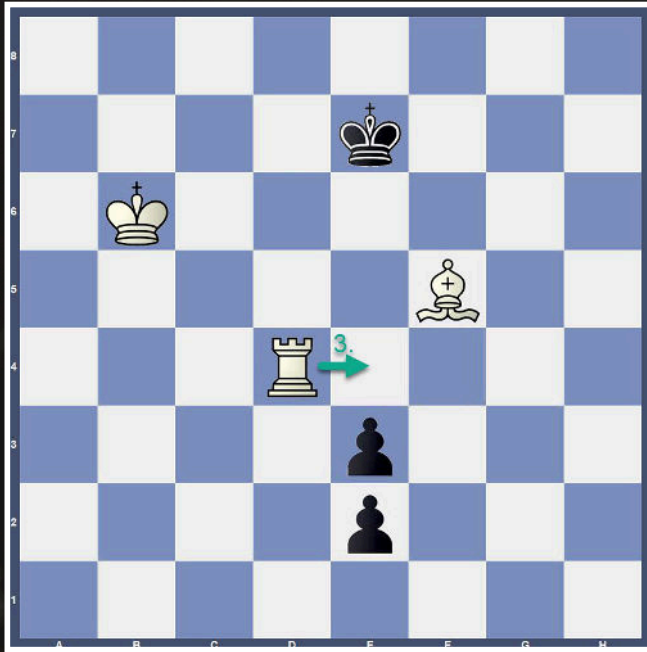
The winning sequence for White involves a combination of precise checks and a brilliant bishop sacrifice:

1. **Bf5** - White checks the black king, forcing it to move.
  2. **1... Kd6** - The black king moves to d6.
  3. **2. Rd4** - White continues with another check, pushing the black king further.
  4. **2... Ke7** - The black king moves to e7.

[Check it on the online chessboard!](#)



## Solution:

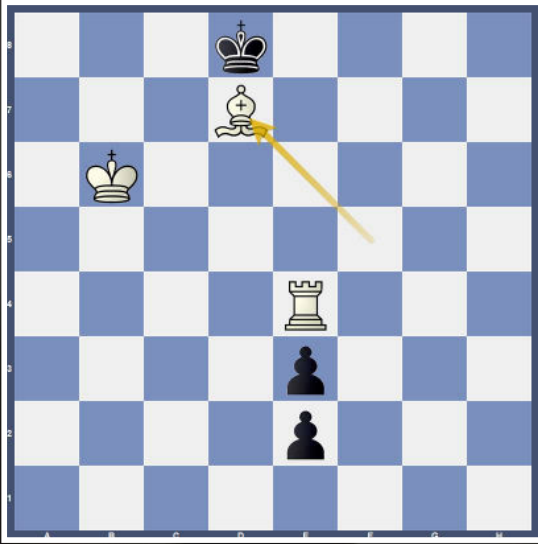


5. **3. Re4** - White checks the black king again.

6. **3... Kd8** - The black king retreats to d8, preparing to use stalemate as a defensive resource.

At this point, capturing the black pawns would result in a stalemate, so White needs to find an alternative plan.

## Solution:



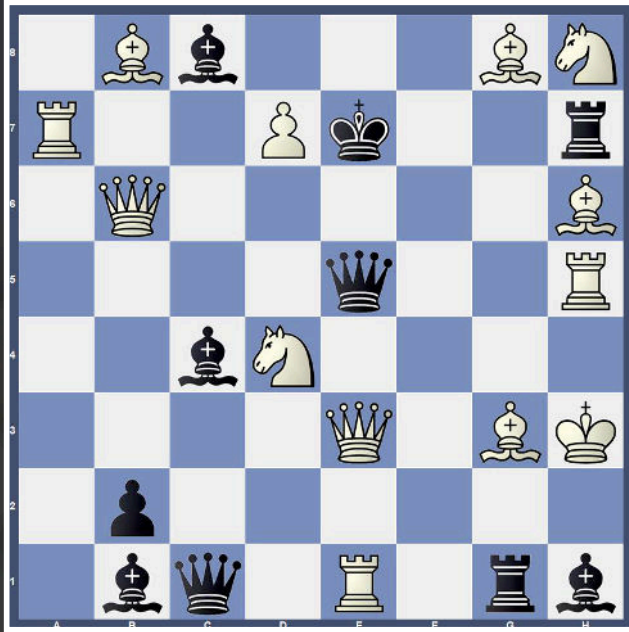
7. 4. **Bd7!!** - White sacrifices the bishop to create a powerful threat. This move aims to set up a mating net with Bb5, forcing Black into a losing position.

## Explanation:

The bishop sacrifice on d7 is the key to breaking through Black's defensive setup. By placing the bishop on d7, White threatens to play Bb5, creating an unavoidable mating net. If Black captures the bishop, White avoids the stalemate and gains a decisive advantage.

This sequence demonstrates the importance of creative and tactical thinking in chess. By sacrificing material and setting up threats, White can navigate through complex defensive strategies and secure a win. Understanding such advanced concepts can greatly enhance a player's ability to handle tricky endgame situations and turn seemingly lost positions into victories.

# +I Chess challenge: One-move Checkmate



Challenge: White to play and deliver  
checkmate in one move

Please note:

This is probably one of the  
hardest checkmates in 1.

**Good luck! :)**

# Ready to continue learning?

Do you wish to get a deeper insight in tricky chess strategies?  
Let's see what I can offer for you.

## Mastering Chess Strategy

### Personalized 1-on-1 Chess coaching

Unlock your chess potential with Krisztian's personalized coaching sessions. Each one-hour, live session on Zoom is tailored to meet your individual learning goals, from basics to advanced strategies.

**Tailored** Chess Coaching  
**1-on-1** online Zoom Meeting  
**Flexible** Scheduling  
**Real-Time** Feedback

Join our 10-part webinar series to progress from basic tactics to advanced chess strategies. This comprehensive program is delivered via weekly one-hour sessions on Zoom, with recordings available for revisiting the lessons.

**Learn Chess Step-By-Step**  
From Basic to Advanced Level  
Structured Learning Path  
Interactive and Engaging  
Online Zoom Meeting  
Session Recordings Available

### Chess Strategies for Business Success

Corporate Training Program

Enhance your team's strategic thinking with our corporate chess training. "Chess Strategies for Business Success" uses chess principles to improve business strategy and decision-making skills. Trusted by leading companies like Google.

**Interactive** Group Sessions  
**Live or Online** via Zoom  
**Proven** at Google

Interested in further details?

[Visit Our Website](#)



# Contact Me

Ready to advance your chess skills or empower your team with strategic insights?

Contact us today to learn more about our programs and how we can help you achieve your goals.

[grandmaster@szabokrisztian.com](mailto:grandmaster@szabokrisztian.com)



[Join Us!](#)